



a schunk company

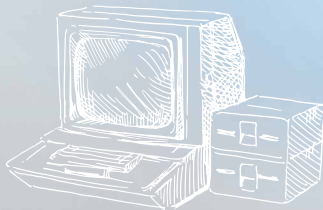
Ingenious inventions enrich our world.
The CoolW@ll enriches your data centre.



4000 BC



19th cent.



20th cent.



21th cent.

The reason why the CoolW@ll is an ingenious invention for data centres:

The innovative CoolW@ll at a glance:

The main idea of the surface cooling system is to install a wall with cooling and filter module from the floor to the ceiling. With this the complete surface of this wall can be used for heat exchanger modules and the infrastructure can be scaled and modulated in a unique way - depending on the local conditions.



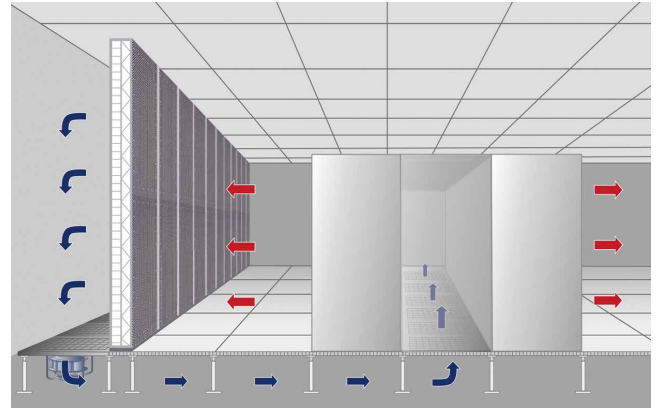
- Most energy-efficient product of its class
- Modular construction with matched individual elements
- Uniquely scalable infrastructure
- Maximum operating and investment security
- Flexible room architecture
- Minimum space requirement
- Future security by good expandability
- Easy installation

We could not reinvent the wheel - but a better cooling system.

The CoolW@ll. Saves space and power.



We at Weiss know the requirements of our customers to cool steadily growing data centres with as low energy and space as possible. And, due to this reason, we broke definitely new grounds when developing our CoolW@ll. By the use of large-surface heat exchangers the complete height and width of the technology room for air-conditioning is utilized. It's that simple. And brilliant.



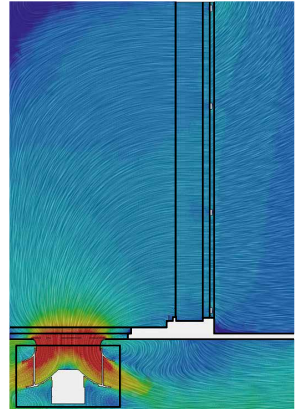
The light bulb was hardly changed for a long time. Up to the time when it was to save energy.

Energy efficiency and maximum capacity are no contradiction. And certainly not with the CoolW@ll.



Due to these reasons the CoolW@ll is the most energy-efficient product of its class at present:

- Lowest internal pressure losses
- Maximum utilization of cooling surfaces
- Optimum flow conditions (refer to graphic arts)
- Large-surface high efficiency heat exchangers
- Latest fan technology



Computers have changed our lives. Now please change the life of computers.

Turn your technology room into a cooling unit. Extremely scalable and flexible. According to your needs.



The CoolW@ll can be installed in all imaginable dimensions and variations, f. ex. on one side, two sides, in the middle or diagonally. So it can be adapted to each room architecture extremely flexible. The extendable cooling surface at any time - in comparison with classic air-conditioning units - and the flexibly adjustable air volume flow with the fans in the double floor enable a maximum adaptation of the cooling capacity. Beyond, the new installation of a CoolW@ll is less expensive than the new installation of precision air-conditioning units.



Innovation - Efficiency - CoolW@ll.

Weiss Klimatechnik GmbH

Greizer Straße 41-49

35447 Reiskirchen-Lindenstruth

Germany

Phone +49 6408 84 6500

Fax +49 6408 84 8720

E-Mail ict@wkt.com

www.wkt.com

